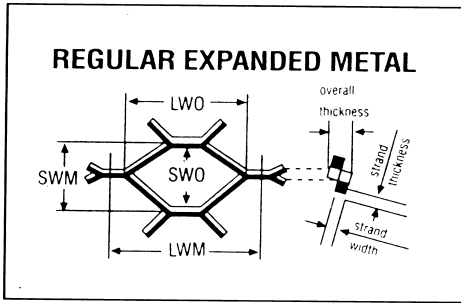
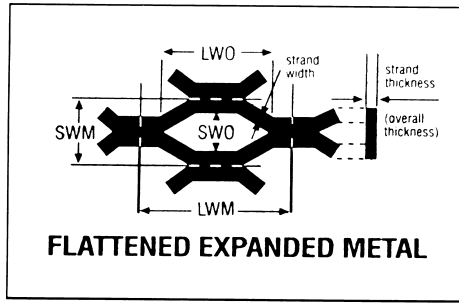


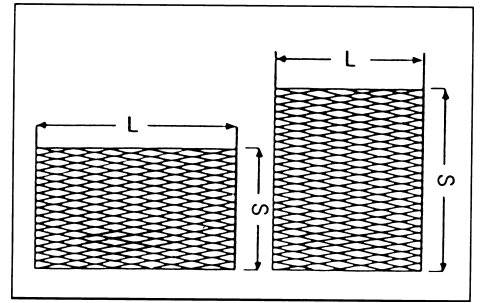
Expanded Metals



SWM – Short way of mesh
LWM – Long way of mesh



SWO – Short way of opening
LWO – Long way of opening



S: SWM – Short of SWM
L: LWM – Long of LWM

Product Specification

Expanded metals is specified first with SWM (Short Way of Mesh) followed by LWM (Long Way of Mesh). The reference number is expressed in four or five digits. The first two digits indicate the thickness of metal and the remaining digits denote strand width. In both cases, the digits are multiplied by 0.1 factor to arrive at the actual dimension in millimetres.

Example: Ref No BMM 3060

Mesh opening = 42mm (SWM) X 115mm (LWM)
Thickness = 30 X 0.1 = 3mm
Strand = 60 X 0.1 = 6mm

Note: The LWM can be precise whilst the SWM dimension is approximate subject to some tolerance varies according to thickness and strand width of the mesh.

Expanded Metals and Its Properties

The unique feature of expanded metals is that the mesh is formed from the same piece of metal. The “knuckles” where the strand joints create some inherent properties of expanded metals:

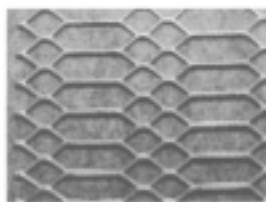
- 1 The intact “knuckles” provides structural support for loading, suitable for with standing stress and support weight better than joining or welding process. As there are no joints or welds, it distributes loads evenly over wider area.
- 2 The open mesh design allows passage of light, air and sound; used for screen mesh, ventilation and security screen in many industrial buildings.
- 3 Lighter in weight yet stronger than steel sheet, thus economical applications for walkway platform, security fencing, machine guards, racking etc.
- 4 Expanded mesh does not fray or unravel when cut or left unframed; ensures high degree of security and protection for security prisons, military installation, bank vaults and high-security fencing.
- 5 The anti-skid surface safety and grip suitable for stairtreads, rugged maintenance floor, gratings and catwalks for factories, shipyards and oil refineries.



SBFM 2020



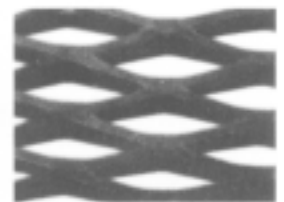
SBMM 3045



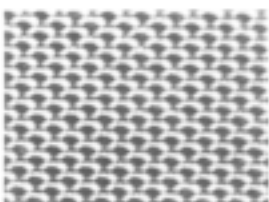
SBBM 3032A



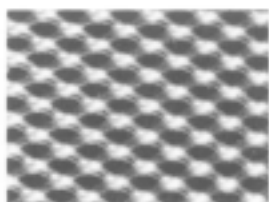
SBMM 3035



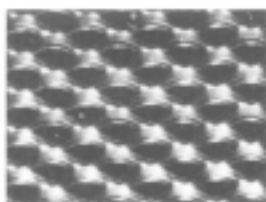
SBWK 50110



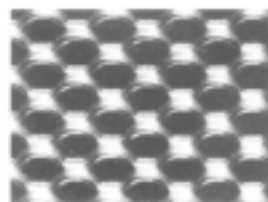
SM1 0505



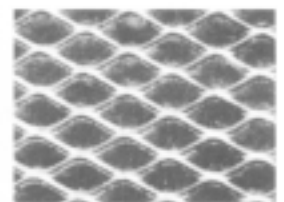
S1 0810



SA2 1010



SA3 0810



SA4 0808

Expanded Metals

Expanded Metals: Specifications

Category	Mesh Reference	Material Type	Opening LWM (mm)	Mesh SWM (mm)	Thickness (mm)	Strand (mm)	Weight $\pm 10\%$ (kg/m ²)	Standard SWM (mm)	Sheet LWM (mm)
Fine Meshes	SFM1510	Steel	29	9	1.0	1.5	2.69	2400	1200
	SFM1520	Steel	29	9	2.0	1.5	5.50	2400	1200
	SFM2010	Steel	38	16	1.0	2.0	2.00	2400	1200
	SFM2015	Steel	38	16	1.5	2.0	3.15	2400	1200
	SFM2815	Steel	57	22	1.5	2.8	3.06	2400	1200
	SFM2820	Steel	57	22	2.0	2.8	3.90	2400	1200
	SFM2020	Steel	38	32	2.0	2.0	2.00	2400	1200
	SFM3020	Steel	76	35	2.0	3.0	2.65	2400	1200
Medium Meshes	SMM3530	Steel	57	22	3.0	3.5	7.30	2400	1200
	SMM4530	Steel	76	35	3.0	4.5	6.60	2400	1200
	SMM6030	Steel	115	42	3.0	6.0	8.00	2400	1200
	SMM3030	Steel	187	50	3.0	3.0	2.83	2400	1200
	SMM5030	Steel	187	50	3.0	5.0	4.71	2400	1200
	SMM5050	Steel	187	50	5.0	5.0	7.85	2400	1200
	SMM7530	Steel	200	75	3.0	7.5	5.20	2400	1200
Ballustrade Meshes	SBM3230	Steel	40/81	25	3.0	3.2	6.05	2400	1200
	SBM3230A	Steel	40/81	25	3.0	3.2	2.09	2400	1200
Walkway Meshes	SWK75050	Steel	75	25	5.0	7.5	23.50	2400	1200
	SWK10550	Steel	75	30	5.0	10.5	27.50	2400	1200
	SWK08030	Steel	75	30	3.0	8.0	12.55	2400	1200
	SWK08050	Steel	135	42	5.0	8.0	14.95	2400	1200
	SWK11050	Steel	135	45	5.0	11.0	19.50	2400	1200

Micro Meshes: Specifications

Category	Mesh Reference	Material Type	Opening LWM (mm)	Mesh SWM (mm)	Thickness (mm)	Strand (mm)	Weight $\pm 10\%$ (kg/m ²)	Standard LWM (mm)	Sheet SWM (mm)
Micro Meshes	SA1 0808	Aluminium	6	4	0.8	0.8		0.7	50
	0810				0.8	0.8		1.0	50
	1010				1.0	1.0		1.2	50
	SA2 0808	Aluminium	6	3.5	0.8	0.8		0.7	50
	0810				0.8	0.8		1.0	50
	1010				1.0	1.0		1.2	50
	SA3 0808	Aluminium	5	3	0.8	0.8		0.7	50
	0810				0.8	0.8		1.0	50
	1010				1.0	1.0		1.2	50
	SA4 0808	Aluminium	8	4	0.8	0.8		0.7	50
	0810				0.8	0.8		1.0	50
	1010				1.0	1.0		1.2	50
	SA5 0808	Aluminium	10	6	0.8	0.8		0.7	50
	0810				0.8	0.8		1.0	50
	1010				1.0	1.0		1.2	50
Mini Meshes	SM1 0505	Aluminium	4	2	0.5	0.5		0.6	50
	SM2 0303		1.5	1	0.3	0.3		0.3	50
	SM3 0202		1.0	0.7	0.2	0.2		0.2	50
	SM4 0202		0.7	0.5	0.2	0.2		0.2	50

Specification normally refers to steel but can manufactured in aluminium and stainless steel.

Sheet tolerance : SWM + 50mm - 0mm
LWM + 19mm - 5mm

Notation : LWM = Long Way of Mesh A = Aluminium
SWM = Short Way of Mesh F = Flattened